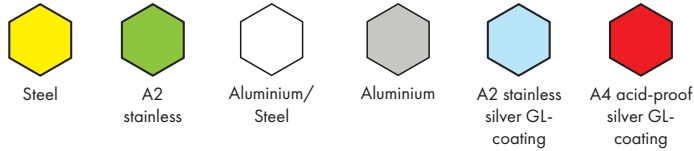


KESPET OY

Cladding the future

Installation equipment and tools



Goebel sockets

Sockets		
Code	Product name	Size
5000405507	Spring socket	AW 7
5000405508	Spring socket	AW 8
5000400014	Magnet socket	AW 1/4
5000400007	Magnet socket	AW 7
5000400008	Magnet socket	AW 8

Goebel metal screws with hexagon head groove

Code	Information	Material	Size	pcs/box	Head
5010142130	solid ground plate	sinkitty	4,2 x 13	1000	SW 1/4"
5030142130	solid ground plate	A2	4,2 x 13	1000	SW 7
5063142130	solid ground plate, GL-coat	AISI 410	4,2 x 13	1000	SW 1/4"

Goebel drill head screws

Drill head screws, hexagonal head groove																												
Code	Drill screws	Material	Size	pcs/box	Head																							
4010142130	solid ground plate	galvanized	4,2 x 13	1000	SW 7																							
4010142160	solid ground plate	galvanized	4,2 x 16	1000	SW 7																							
4010142190	solid ground plate	galvanized	4,2 x 19	1000	SW 7																							
4010148190	solid ground plate	galvanized	4,8 x 19	1000	SW 8																							
4066142190	solid ground plate, GL-coating	AISI 410	4,2 x 19	1000	SW 7																							
4066148160	solid ground plate, GL-coating	AISI 410	4,8 x 16	500	SW 8																							
4066148190	solid ground plate, GL-coating	AISI 410	4,8 x 19	500	SW 8																							
4066148250	solid ground plate, GL-coating	AISI 410	4,8 x 25	500	SW 8																							
8881042160	solid ground plate, GL-coating	A2 (BI-metal)	4,2 x 16	1000	SW 7																							
8881048250	solid ground plate, GL-coating	A2 (BI-metal)	4,8 x 25	500	SW 8																							
Drill screws with weatherstrip																												
4010348190	galvanized ground plate, EPDM-strip	sinkitty	4,8 x 19	500	SW 8																							
4062448160	GL-coating, stainless steel ground plate, EPDM-strip	AISI 410	4,8 x 16	500	SW 8																							
4062448190	GL-coating, stainless steel ground plate, EPDM-strip	AISI 410	4,8 x 19	500	SW 8																							
4062448250	GL-coating, stainless steel ground plate, EPDM-strip	AISI 410	4,8 x 25	500 </tr <tr> <td>8990042160</td> <td>GL-coating, stainless steel ground plate, EPDM-strip</td> <td>A2 (BI-metal)</td> <td>4,2 x 16</td> <td>500</td> <td>SW 7</td> </tr> <tr> <td>8990048190</td> <td>GL-coating, stainless steel ground plate, EPDM-strip</td> <td>A2 (BI-metal)</td> <td>4,8 x 19</td> <td>500</td> <td>SW 8</td> </tr> <tr> <td>8890148200</td> <td>GL-coating, stainless steel ground plate, EPDM-strip, no groove</td> <td>A2 (BI-metal)</td> <td>4,8 x 20</td> <td>250</td> <td>SW 8</td> </tr> <tr> <td>8890048250</td> <td>GL-coating, stainless steel ground plate, EPDM-strip</td> <td>A2 (BI-metal)</td> <td>4,8 x 25</td> <td>500</td> <td>SW 8</td> </tr>	8990042160	GL-coating, stainless steel ground plate, EPDM-strip	A2 (BI-metal)	4,2 x 16	500	SW 7	8990048190	GL-coating, stainless steel ground plate, EPDM-strip	A2 (BI-metal)	4,8 x 19	500	SW 8	8890148200	GL-coating, stainless steel ground plate, EPDM-strip, no groove	A2 (BI-metal)	4,8 x 20	250	SW 8	8890048250	GL-coating, stainless steel ground plate, EPDM-strip	A2 (BI-metal)	4,8 x 25	500	SW 8
8990042160	GL-coating, stainless steel ground plate, EPDM-strip	A2 (BI-metal)	4,2 x 16	500	SW 7																							
8990048190	GL-coating, stainless steel ground plate, EPDM-strip	A2 (BI-metal)	4,8 x 19	500	SW 8																							
8890148200	GL-coating, stainless steel ground plate, EPDM-strip, no groove	A2 (BI-metal)	4,8 x 20	250	SW 8																							
8890048250	GL-coating, stainless steel ground plate, EPDM-strip	A2 (BI-metal)	4,8 x 25	500	SW 8																							

Goebel Rivets and Drill Head Screws

Pull rivet round head		
Code	Size	pcs/box
Aluminium/steel		
7070132800	3,2 x 8	1000
7070132100	3,2 x 10	1000
7070132120	3,2 x 12	1000
7070140120	4,0 x 12	1000
7070148120	4,8 x 12	500
Steel/steel		
7080132800	3,2 x 8	1000
7080132100	3,2 x 10	1000
7080132120	3,2 x 12	1000
7080140120	4,0 x 12	1000
7080148120	4,8 x 12	500
A2/A2 = Stainless steel		
7030132600	3,2 x 6	1000
7030132800	3,2 x 8	1000
7030132100	3,2 x 10	1000
7030132120	3,2 x 12	1000
7030140120	4,0 x 12	500
7030148120	4,8 x 12	500
A4/A4 = Acid-proof steel		
7044132800	3,2 x 8	1000
7044132100	3,2 x 10	1000
7044148120	4,8 x 12	500
Closed waterproof with grooved feed rod A2/C1		
Code	Size	pcs/box
2180140950	4,0 x 9,5	500
Two-headed pop-rivets		
Code	Size	pcs/box
9013250000	3,25	10
9013300000	3,3	10
9014100000	4,1	10
9014900000	4,9	10





Goebel toggles

Code	Toggle model	pcs/box
0/40		
5543001040	galvanized	100
5544512040	stainless steel A2	100
5577533040	aluminium	100
0/40F		
5543011040	galvanized	100
5544502040	stainless steel A2	100
1/60		
5543001160	galvanized	100
5544502160	stainless steel A2	100
5577533160	aluminium	100
1/60F		
5543011160	galvanized	100
5544512160	stainless steel A2	100
2/55/60		
5543001255	galvanized	100
5544512256	stainless steel A2	100
5577533250	aluminium	100
2/55/60F		
5543011255	galvanized	100
5544512255	stainless steel A2	100
3/70		
5543001370	galvanized	100
5544512370	stainless steel A2	100
5577533370	aluminium	100
3/70F		
5543011370	galvanized	100
5544502370	stainless steel A2	100
4/80		
5543001480	galvanized	50
5544502480	stainless steel A2	50
4/80F		
5543011480	galvanized	50
5544512480	stainless steel A2	50
50		
5543011500	galvanized	100

Code	Toggle model	pcs/box
42SP		
5543010042	galvanized	100
5544510042	stainless steel A2	100
42SPPC		
5543020042	galvanized	100
5544520042	stainless steel A2	100
44PC		
5543011044	galvanized	50
5544511044	stainless steel A2	50
5577511044	aluminium	50
44SP		
5543010044	galvanized	50
5544510044	stainless steel A2	50
44SPPC		
5543020044	galvanized	50
5544520044	stainless steel A2	50
65F		
5540044650	galvanized	10
5588544650	stainless steel A2	10
80F		
5540044800	galvanized	10
5588544800	stainless steel A2	10
701S		
5543312701	galvanized	10
5544512744	stainless steel A4	10
702S		
5543312702	galvanized	10
5544512702	stainless steel A4	10
703S		
5543312703	galvanized	10
5544512703	stainless steel A4	10
2/50		
5543012500	galvanized	100
5544522500	stainless steel A2	100
5544532500	stainless steel A4	100
2/100		
5544522100	stainless steel A2	50



Steel



A2
stainless



Aluminium/
Steel

Elastomeric insulation accessories

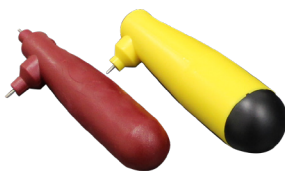
Product	Quantity
Armaflex EL elastomeric insulation tape	roll
Armaflex Ultima elastomeric insulation tape	roll
Armaflex Ultima adhesive 700	1 l
Armaflex general adhesive 520 brush tip	0,25 l
Armaflex general adhesive 520	0,5 l
Armaflex general adhesive 520	1 l
Armaflex general adhesive 520	2,5 l
Armaflex special cleaning agent	1 l
Neofix 1065 contact adhesive	1000 ml
Neofix 1065R spray adhesive	1000 ml
Neofix 1065 R spray adhesive	3000 ml
Brush 30 mm	pc
Brush 70 mm	pc
Brush 11 mm for glue can	pc
Brush 17 mm for glue can	pc
Adhesive can (17 mm brush) with long tip	pc
Adhesive can (17 mm brush) with short tip	pc
Seam tape 38 mm x 33 m, black pvc	pc
Seam tape 50 mm x 33 m, black pvc	pc

PVC-cladding accessories

Product	Package
PVC-rivets, white and grey	1000 pcs
PVC-rivet tool angled	pc
PVC-rivet tool combo	pc
Seam tape 25 mm x 33 m, grey	roll
Seam tape 30 mm x 33 m, grey	roll

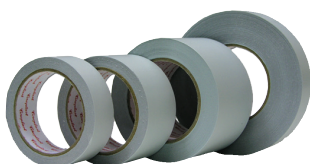
End mountings

Width mm	m/roll	m/box
20	10	50
30	10	50
40	10	50
50	10	50
60	10	50
80	10	50
100	10	50



Coroplast aluminium tape black

Pure aluminium tape, 75 mm x 50 m. 18 rolls/box.



Coroplast aluminium tape

Pure aluminium tape.

50 mm x 25 m (54 rolls/box)

50 mm x 100 m (24 rolls/box)

75 mm x 100 m (16 rolls/box)



Tape for taping machine

Plastic based aluminium tape.

50 mm x 100 m (54 rolls/box)

75 mm x 100 m (36 rolls/box)



Taping machine

A handy tool for taping. Spare blades are also available.



AC-tape

50 mm x 50 m.



Steel wire

100 rolls/box. Galvanized wire weight 170 g/rolll.

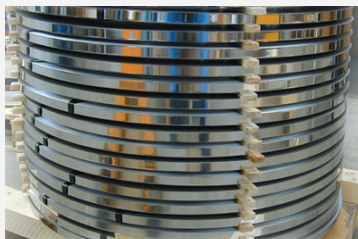
Galvanized, 0,9 mm

Stainless, 0,9 mm



Mat hooks

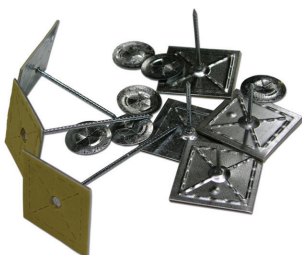
2 x 115 mm, 100 pcs/box.



Binding bands

Galvanized: 16 x 0,5 mm, approx. 25 kg/coil.

Stainless: 16 x 05, mm, approx. 20 kg/coil.



Climatech adhesive spikes

Round fastening plate 2,7 mm for adhesive spikes.
Includes fastening plate. 100 pieces/box.

25 mm

32 mm

42 mm

51 mm

63 mm

89 mm

114 mm

125 mm

140 mm



Lock plates

Diameter 40 mm, fastening spike Ø 4 mm.
6000 pieces/box.
Galvanized
Stainless



Springscrew

Used for stonewool slab installations. Length 120 mm.
250 pcs/box.



F-100 ACCU welding device

Portable and lightweight capacitor based welding machine, that enables insulation material to be attached into sheet metal using welding pins. The package includes 2 batteries and a protective carrying case. Weight: 16,8 kg.



F-100 ACCU CLIM CDF welding pins

Pin diameter 2,7 mm. Galvanized washer diameter 30 mm. Pins sold in 1000 pc packages.

19 mm
28 mm
48 mm
62 mm
72 mm
90 mm
100 mm



Pin Welder PW-33 for insulation brackets

Durable welding equipment for insulation brackets.
Weight 4 kg. Built-in timer for optimal welding time.
Metal case included.



CLIM PINS weldable insulation fasteners

Can be welded with PIN WELDER PW-33 equipment or similar. Galvanized.

19 mm
32 mm
42 mm
51 mm
63 mm
89 mm
114 mm
140 mm



Pin Welder PW-33 fastener plates

Round fastener plate for 2,0/2.7/3.0 mm fasteners, 1,4 mm diameter centre hole. 1000 pcs/box.



Sheet Metal Tensioners

DS 3 sheet metal clip, compatible with 3,2 mm hole.



Bostitch P-7 staple pliers

Staples 2500 pcs/box.



Bostitch T6 stapler

Patented comfort grip with an easy to squeeze mechanism. Antijam magazine and convenient bottom reloading. Staples 12 mm, 5000 pcs/box.



Glass fibre strip

2 mm x 30 mm x 50 mm with adhesive surface.



Angle ruler

200 mm
300 mm
500 mm



Angle ruler

150 x 200 mm
200 x 400 mm



Compass

200 mm
250 mm
300 mm



Insulation installers wool shears

Cut length 180 mm, total length 520 mm.



Insulation wool shears, long handle

Long-armed scissors enable ergonomic working positions. Cut length 200 mm, total length 970 mm.



Insulation wool shears, forged

Forged wave blade, total length 570 mm.



Insulation wool shears

Straight cut basic scissors. Cut length 230 mm, total length 570 mm.



Sheet metal shears, Erdi 118

For long straight cuts. Length 300 mm. Right-, and lefthand models.



Sheet metal shears, Erdi 116

SS-steel, for straight and form cuts. Length 280 mm, right and left handed.



Sheet metal shears, Erdi 29 ASS

Lever operated sheet metal scissors for straight and form cuts. Length 280 mm, right and left handed.



Bahco® -sheet metal shears

Traditional sheet metal workers scissors. Large jaw opening angle enables specific cuts to be made. Length 280 mm, right and left handed.



Vise-Grip® -locking pliers

Manufactured from high-grade heat treated alloy steel for maximum durability. Classic trigger release designed for providing sturdy locking force. 7" /175 mm.



Knipex sidecutters

Manufactured from special steel for tools. Single joint. Thick multi-component grips. 180 mm length.



Knipex combined pliers

Manufactured from special steel for tools. Grippled jaws with central cutter. Single joint. Thick multi-component grips.



Molding/sill pliers

45° bent pliers, 60 mm jaw width.



Signode ST-strapping tool

Professional hand tool for installing tank sheet metal claddings and large pipe claddings as well as fastening pipe insulation fastening bands. Also suitable for fastening package bands. Band width 9,5-19,0 mm. Band thickness 0,38-0,63 mm.



Single handed cladding tightener

For installing sheet metal claddings.



Wired mad plaiting hook



Cement pistol



Aluminium foil

According to standard SFS 3914.P4.
1000 x 0,05 mm
1000 x 0,08 mm



Puncher chisel

Available options include a Stubai 40 mm bladed chiseld or a Witte -chisel, with a 50mm blade.



Multipurpose knife

Carbon steel blade 2,5 mm. Quenching 58-60 HRC.
Plastic handle and case with belt holder / hanger.



Wool knife, wooden handle

The measurements presented on the right describe blade length.
200 mm
280 mm



Ceramic knives

The measurements presented on the right describe blade length.
10 cm
12,5 cm



Tecos T-HR03 rivet tool

High quality rivet tool for professional use. Capacity for steel and aluminium 2,4 mm - 5,0 mm (teräs ja alumiini). Capacity for stainless rivets 2,4 mm - 4,0 mm. Sturdy locking mechanism keeps rivets in place.



Gesipa battery rivet tool "Accubird"

Gesipa 14,4V, pop-rivet diameter up to 5 mm for all materials. 2 batteries. Spare parts: clamping jaws, clamping jaws rivet Ø 6,3 mm mouthpiece, pressure socket, spare cover, nozzle 17/24, nozzle 17/27, nozzle 17/29, nozzle 17/32.



Goebel battery rivet tool GO-100

Wireless riveter with two batteries 14,4 V. For rivets 2,4-5,0 mm, for all materials.



Dewalt battery bending machine

Max. working thickness aluminium 1,2 mm, hot galvanized 1,0 mm and stainless 0,9 mm. Includes carrying device, quick charging device, 2 x battery 4,0 Ah, 18 V NiMH and roller pairs for beading V4, V6, V8 and V10. Wrinkle and plain roller pairs according to the order. Spare parts: spare battery, spare charging device, stopper plate, wrinkle rollers and plain rollers.



PVC-cladding cutting table

Cut width measuring ruler and a sturdy linecutter. A proper cutting table makes working on-site easier.



Piano hinge

Stainless steel length 3,5 m x width 40 mm, thickness 0,7 mm



Handle

Stainless steel, total length 160 mm.



Fiskars scissors

Ergonomical classic model, right handed.



Utility knife

Blade width 18 mm. Spare blades 10 pcs/box.



Talmeter

Easy to measure inner and outer dimensions, draw arches, diameters and biscuits.



Marker pen Textmark 700

Colours: red and black. Available colours according to the order: blue, green, yellow, brown, orange and violet.



PETZL helmet

Protective helmet with full strapping. Helmet has an adaptor for eye protection, face visor and head lamp. Helmet fulfills standard EN 397 requirements for impacts, dropping objects and side pressure also in low temperatures. Also available in blue and yellow.



PETZL led-light

This forehead worn led light has a high quality optical combination beam, which offers even lighting for close-up work.



Respirators

With valve P2, 20 pcs/box. Without valve P2 15 pcs/box.



Protective eyewear



Cut protectoin gloves CUT-5

Excellent cut protection and feel.
Sizes 9-11. (12 pieces/pack).



LH polyurethane gloves

Excellent working feel. Sizes 8-11. (12 pieces/pack).



Installers glove

Excellent overall glove. Sizes 8-10. (12 pieces/pack).